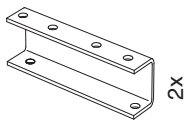
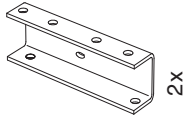


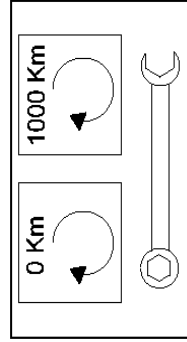


JUMPER + BOXER + DUCATO
2006 →

Type: 9070819



(A)		8x M8x30 cl. 10.9 (40Nm)
(B)		4x M10x35 cl. 10.9 (62Nm)
(C)		2x M16x55 cl. 8.8 (230Nm)
(D)		8x M8 cl. 10.9
(E)		4x M10 cl. 10.9
(F)		2x M16 cl. 8.8

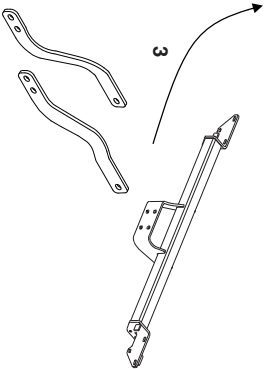




1



2

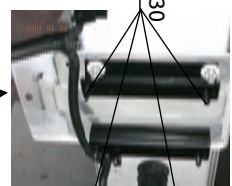
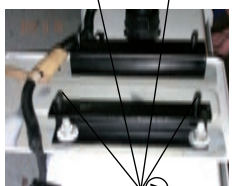
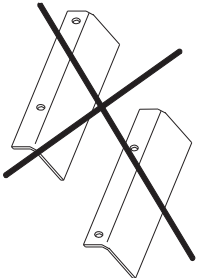
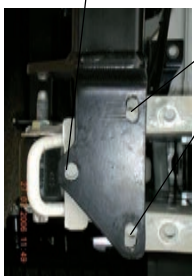


3



Ⓜ 4x M10X35
Ⓜ 4x M10

2x M10X45
2x M10

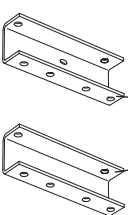
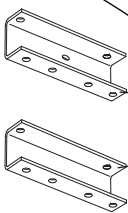


Ⓜ 8x M18X30

4



5



Ⓜ 8x M8

6